

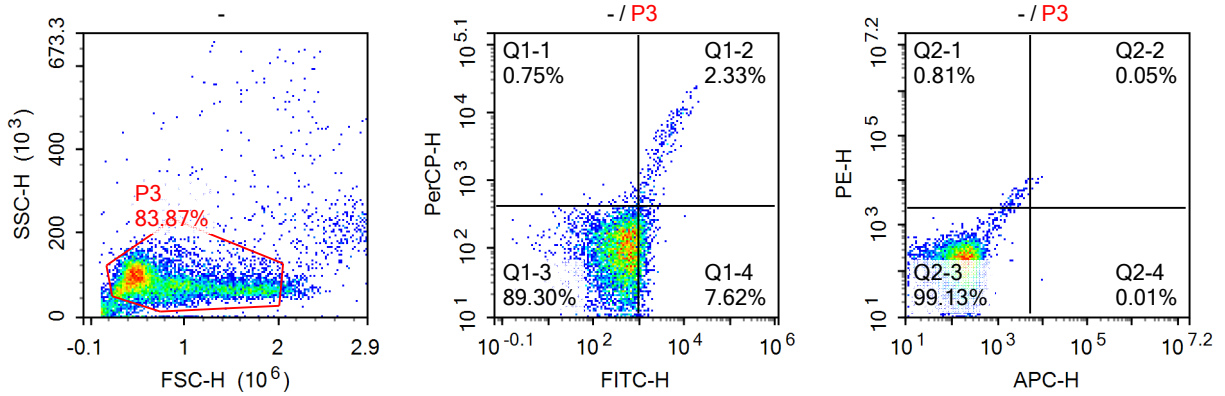
27B 报告

标本名: 27B

检验时间: 2021/6/25 15:14

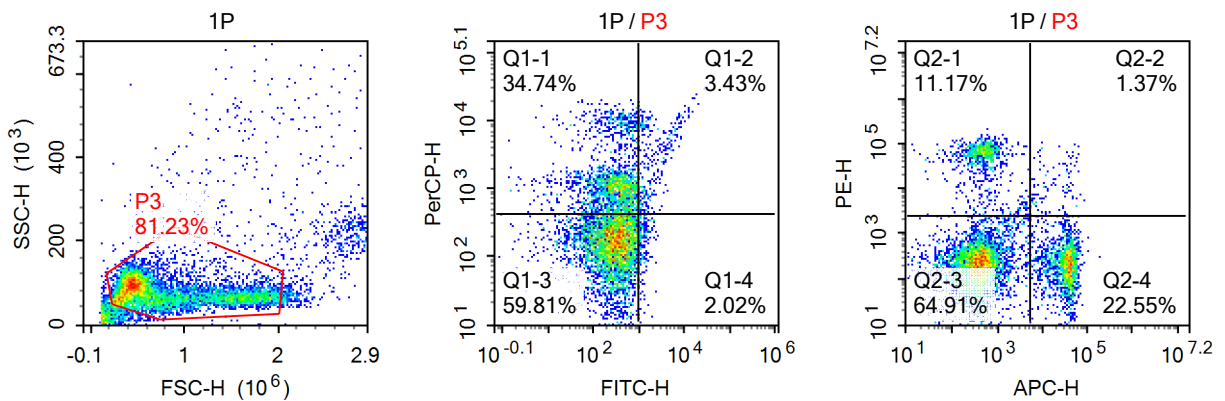
仪器: NovoCyte 452170827871

软件: NovoExpress 1.3.0



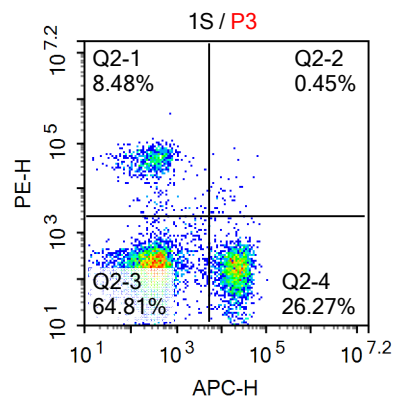
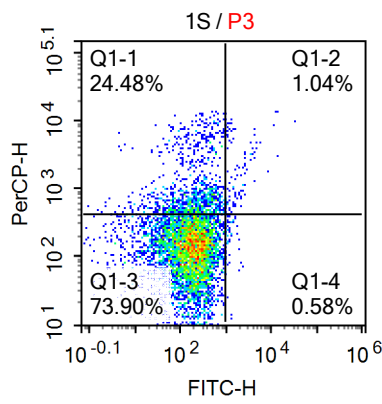
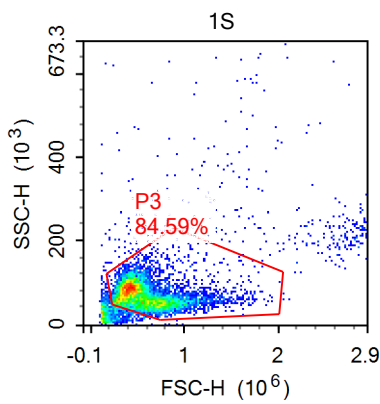
样本统计表格 --

Gate	Count	% Parent	X	Y	Median X	Median Y
All	10,000					
P3	8,387	83.87%	FSC-H	SSC-H	600,369	79,903
Q1-1	63	0.75%	FITC-H	PerCP-H	607	490
Q1-2	195	2.33%	FITC-H	PerCP-H	2,830	2,734
Q1-3	7,490	89.30%	FITC-H	PerCP-H	376	55
Q1-4	639	7.62%	FITC-H	PerCP-H	1,164	73
Q2-1	68	0.81%	APC-H	PE-H	2,110	4,047
Q2-2	4	0.05%	APC-H	PE-H	7,435	10,281
Q2-3	8,314	99.13%	APC-H	PE-H	142	106
Q2-4	1	0.01%	APC-H	PE-H	9,508	67



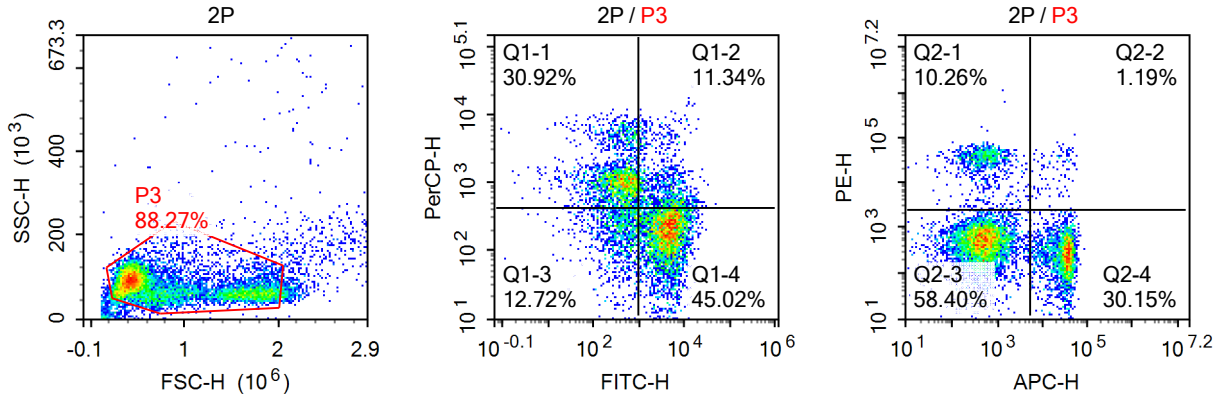
样本统计表格 - 1P

Gate	Count	% Parent	X	Y	Median X	Median Y
All	10,000					
└ P3	8,123	81.23%	FSC-H	SSC-H	572,880	75,095
├─ Q1-1	2,822	34.74%	FITC-H	PerCP-H	170	1,206
├─ Q1-2	279	3.43%	FITC-H	PerCP-H	1,697	3,629
├─ Q1-3	4,858	59.81%	FITC-H	PerCP-H	251	134
├─ Q1-4	164	2.02%	FITC-H	PerCP-H	1,207	159
├─ Q2-1	907	11.17%	APC-H	PE-H	483	58,429
├─ Q2-2	111	1.37%	APC-H	PE-H	22,450	10,817
├─ Q2-3	5,273	64.91%	APC-H	PE-H	343	156
├─ Q2-4	1,832	22.55%	APC-H	PE-H	34,501	178



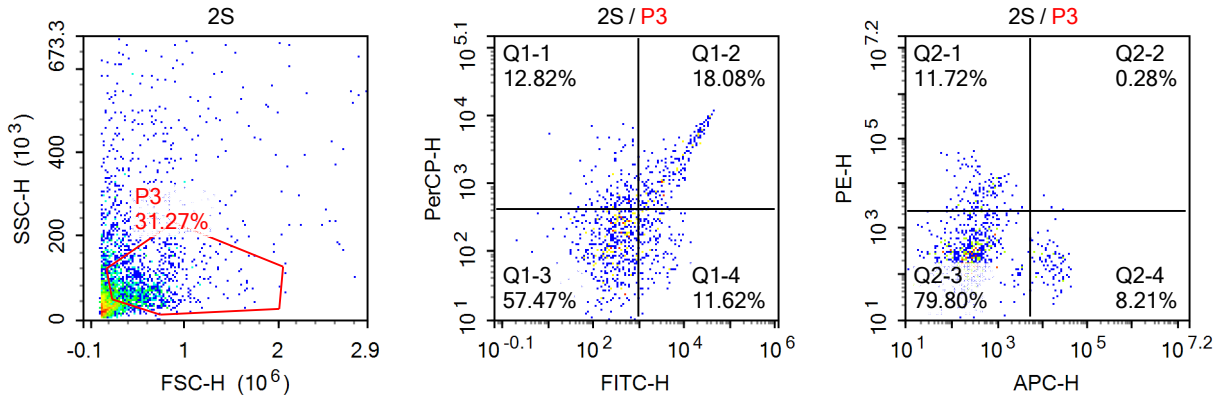
样本统计表格 - 1S

Gate	Count	% Parent	X	Y	Median X	Median Y
All	10,000					
└ P3	8,459	84.59%	FSC-H	SSC-H	496,821	68,053
├─ Q1-1	2,071	24.48%	FITC-H	PerCP-H	-8	779
├─ Q1-2	88	1.04%	FITC-H	PerCP-H	1,581	1,719
├─ Q1-3	6,251	73.90%	FITC-H	PerCP-H	139	109
├─ Q1-4	49	0.58%	FITC-H	PerCP-H	1,163	179
├─ Q2-1	717	8.48%	APC-H	PE-H	304	42,094
├─ Q2-2	38	0.45%	APC-H	PE-H	12,400	6,469
├─ Q2-3	5,482	64.81%	APC-H	PE-H	270	132
├─ Q2-4	2,222	26.27%	APC-H	PE-H	20,143	134



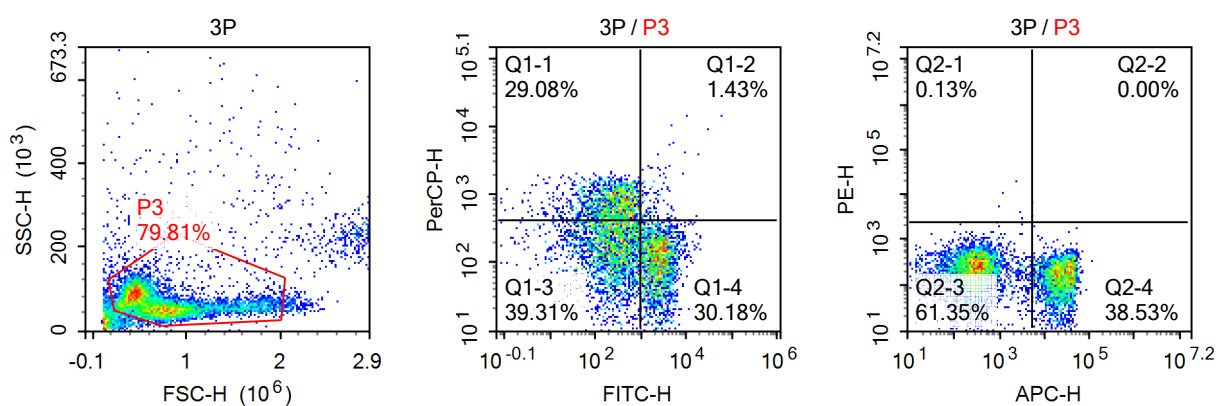
样本统计表格 - 2P

Gate	Count	% Parent	X	Y	Median X	Median Y
All	10,000					
P3	8,827	88.27%	FSC-H	SSC-H	576,938	76,300
Q1-1	2,729	30.92%	FITC-H	PerCP-H	278	1,135
Q1-2	1,001	11.34%	FITC-H	PerCP-H	3,957	727
Q1-3	1,123	12.72%	FITC-H	PerCP-H	366	175
Q1-4	3,974	45.02%	FITC-H	PerCP-H	4,025	148
Q2-1	906	10.26%	APC-H	PE-H	493	33,306
Q2-2	105	1.19%	APC-H	PE-H	22,898	24,724
Q2-3	5,155	58.40%	APC-H	PE-H	429	442
Q2-4	2,661	30.15%	APC-H	PE-H	31,218	205



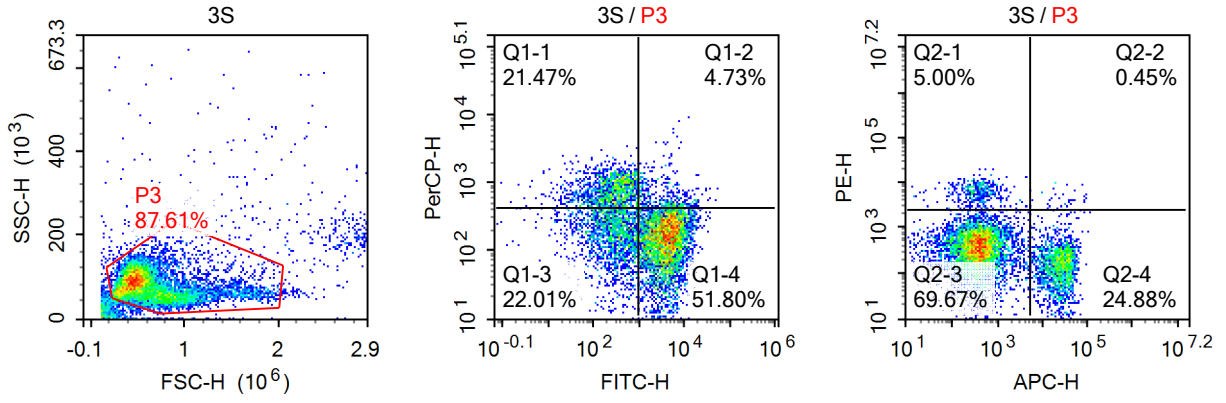
样本统计表格 - 2S

Gate	Count	% Parent	X	Y	Median X	Median Y
All	3,467					
P3	1,084	31.27%	FSC-H	SSC-H	482,603	70,078
Q1-1	139	12.82%	FITC-H	PerCP-H	307	759
Q1-2	196	18.08%	FITC-H	PerCP-H	4,669	1,588
Q1-3	623	57.47%	FITC-H	PerCP-H	243	87
Q1-4	126	11.62%	FITC-H	PerCP-H	2,188	129
Q2-1	127	11.72%	APC-H	PE-H	378	6,806
Q2-2	3	0.28%	APC-H	PE-H	14,699	3,124
Q2-3	865	79.80%	APC-H	PE-H	201	175
Q2-4	89	8.21%	APC-H	PE-H	16,210	151



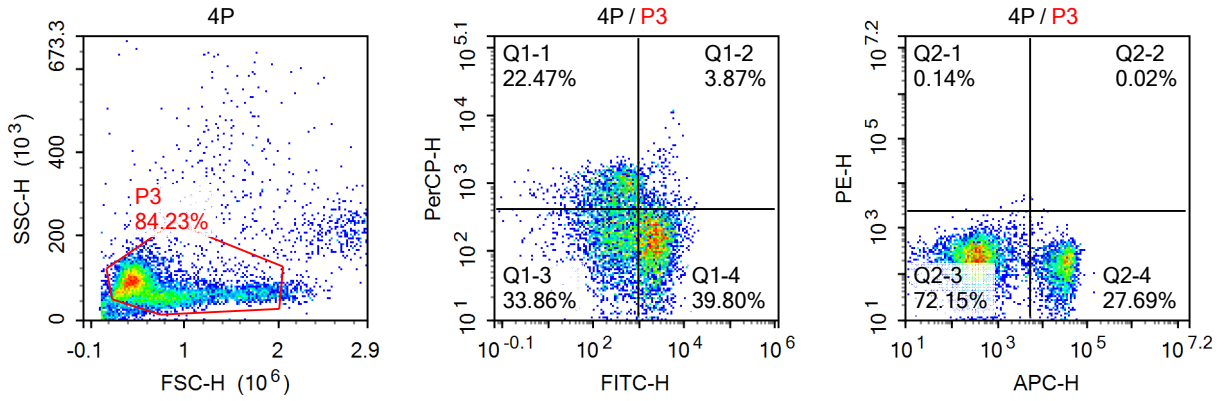
样本统计表格 - 3P

Gate	Count	% Parent	X	Y	Median X	Median Y
All	10,000					
P3	7,981	79.81%	FSC-H	SSC-H	623,012	61,655
Q1-1	2,321	29.08%	FITC-H	PerCP-H	114	741
Q1-2	114	1.43%	FITC-H	PerCP-H	1,892	769
Q1-3	3,137	39.31%	FITC-H	PerCP-H	195	140
Q1-4	2,409	30.18%	FITC-H	PerCP-H	2,379	82
Q2-1	10	0.13%	APC-H	PE-H	2,537	3,804
Q2-2	0	0.00%	APC-H	PE-H	0	0
Q2-3	4,896	61.35%	APC-H	PE-H	253	181
Q2-4	3,075	38.53%	APC-H	PE-H	21,254	120



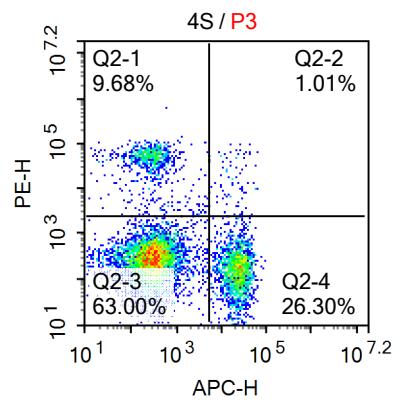
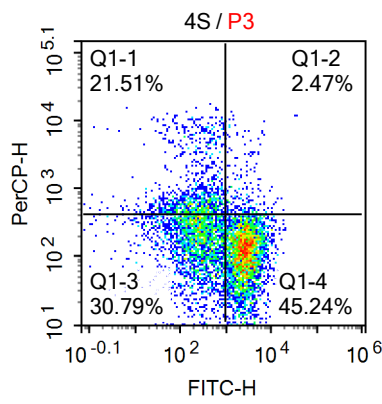
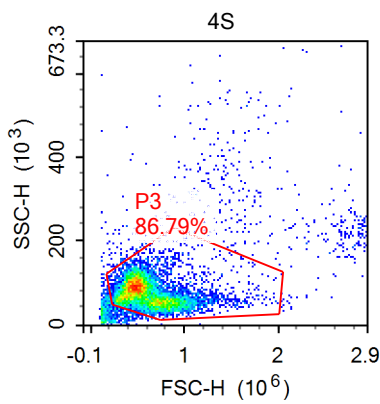
样本统计表格 - 3S

Gate	Count	% Parent	X	Y	Median X	Median Y
All	10,000					
P3	8,761	87.61%	FSC-H	SSC-H	548,420	76,673
Q1-1	1,881	21.47%	FITC-H	PerCP-H	160	768
Q1-2	414	4.73%	FITC-H	PerCP-H	4,258	540
Q1-3	1,928	22.01%	FITC-H	PerCP-H	249	155
Q1-4	4,538	51.80%	FITC-H	PerCP-H	3,748	123
Q2-1	438	5.00%	APC-H	PE-H	350	6,429
Q2-2	39	0.45%	APC-H	PE-H	33,720	4,236
Q2-3	6,104	69.67%	APC-H	PE-H	340	309
Q2-4	2,180	24.88%	APC-H	PE-H	22,924	115



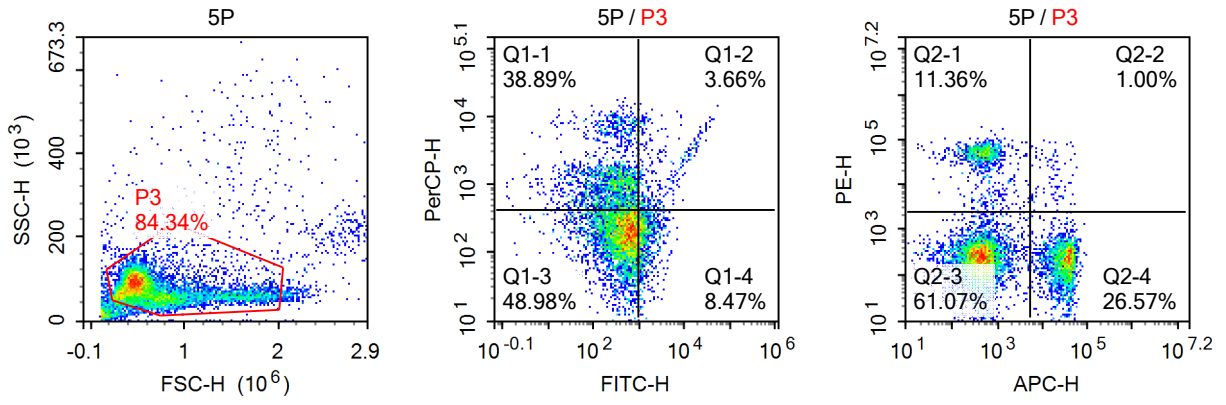
样本统计表格 - 4P

Gate	Count	% Parent	X	Y	Median X	Median Y
All	10,000					
P3	8,423	84.23%	FSC-H	SSC-H	518,230	74,987
Q1-1	1,893	22.47%	FITC-H	PerCP-H	202	815
Q1-2	326	3.87%	FITC-H	PerCP-H	2,022	647
Q1-3	2,852	33.86%	FITC-H	PerCP-H	263	130
Q1-4	3,352	39.80%	FITC-H	PerCP-H	2,161	109
Q2-1	12	0.14%	APC-H	PE-H	3,068	3,954
Q2-2	2	0.02%	APC-H	PE-H	11,594	2,695
Q2-3	6,077	72.15%	APC-H	PE-H	305	168
Q2-4	2,332	27.69%	APC-H	PE-H	27,272	112



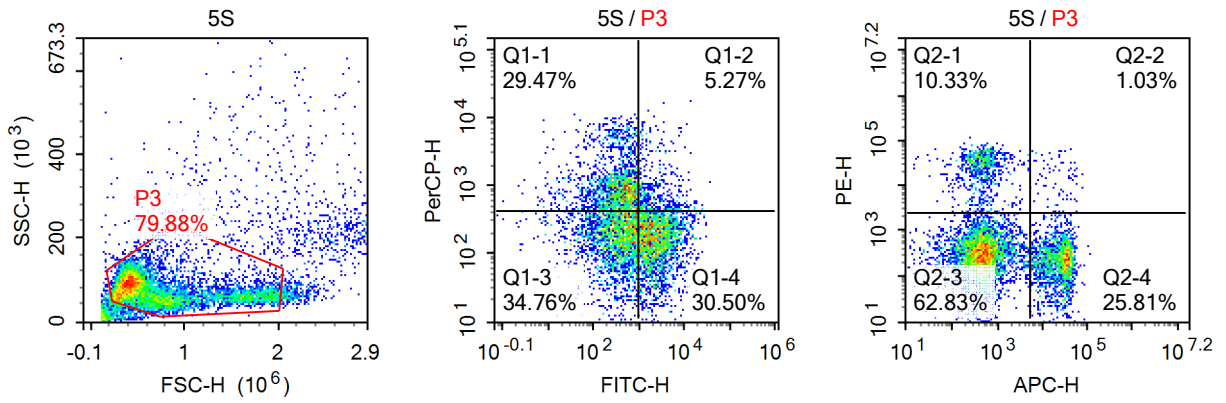
样本统计表格 - 4S

Gate	Count	% Parent	X	Y	Median X	Median Y
All	10,000					
P3	8,679	86.79%	FSC-H	SSC-H	542,362	73,869
Q1-1	1,867	21.51%	FITC-H	PerCP-H	34	815
Q1-2	214	2.47%	FITC-H	PerCP-H	2,437	666
Q1-3	2,672	30.79%	FITC-H	PerCP-H	218	146
Q1-4	3,926	45.24%	FITC-H	PerCP-H	2,495	87
Q2-1	840	9.68%	APC-H	PE-H	250	49,330
Q2-2	88	1.01%	APC-H	PE-H	20,316	13,048
Q2-3	5,468	63.00%	APC-H	PE-H	258	240
Q2-4	2,283	26.30%	APC-H	PE-H	22,190	120



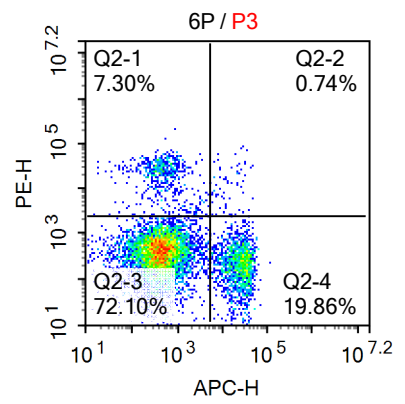
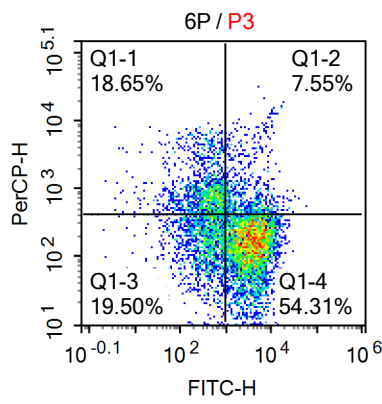
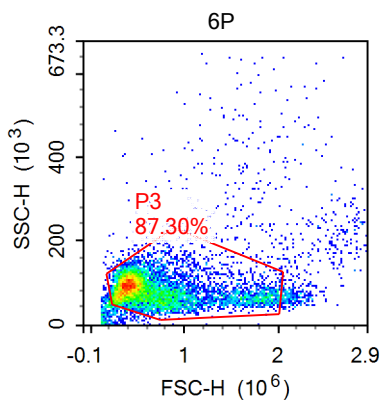
样本统计表格 - 5P

Gate	Count	% Parent	X	Y	Median X	Median Y
All	10,000					
P3	8,434	84.34%	FSC-H	SSC-H	557,313	70,976
Q1-1	3,280	38.89%	FITC-H	PerCP-H	63	1,154
Q1-2	309	3.66%	FITC-H	PerCP-H	2,176	1,493
Q1-3	4,131	48.98%	FITC-H	PerCP-H	434	165
Q1-4	714	8.47%	FITC-H	PerCP-H	1,257	168
Q2-1	958	11.36%	APC-H	PE-H	477	47,234
Q2-2	84	1.00%	APC-H	PE-H	17,511	12,906
Q2-3	5,151	61.07%	APC-H	PE-H	384	187
Q2-4	2,241	26.57%	APC-H	PE-H	30,377	172



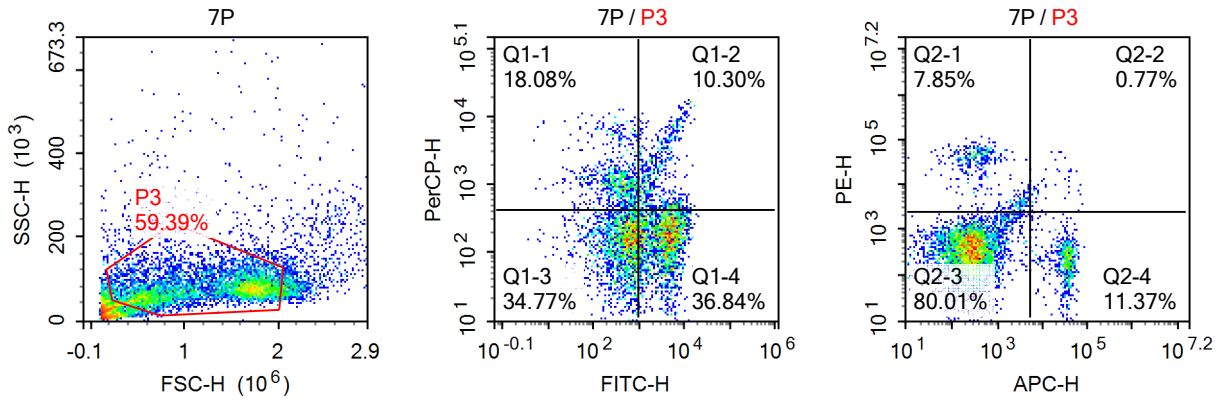
样本统计表格 - 5S

Gate	Count	% Parent	X	Y	Median X	Median Y
All	10,000					
P3	7,988	79.88%	FSC-H	SSC-H	541,451	72,196
Q1-1	2,354	29.47%	FITC-H	PerCP-H	259	987
Q1-2	421	5.27%	FITC-H	PerCP-H	2,158	685
Q1-3	2,777	34.76%	FITC-H	PerCP-H	315	152
Q1-4	2,436	30.50%	FITC-H	PerCP-H	2,288	140
Q2-1	825	10.33%	APC-H	PE-H	425	28,412
Q2-2	82	1.03%	APC-H	PE-H	22,183	13,594
Q2-3	5,019	62.83%	APC-H	PE-H	411	244
Q2-4	2,062	25.81%	APC-H	PE-H	25,594	186



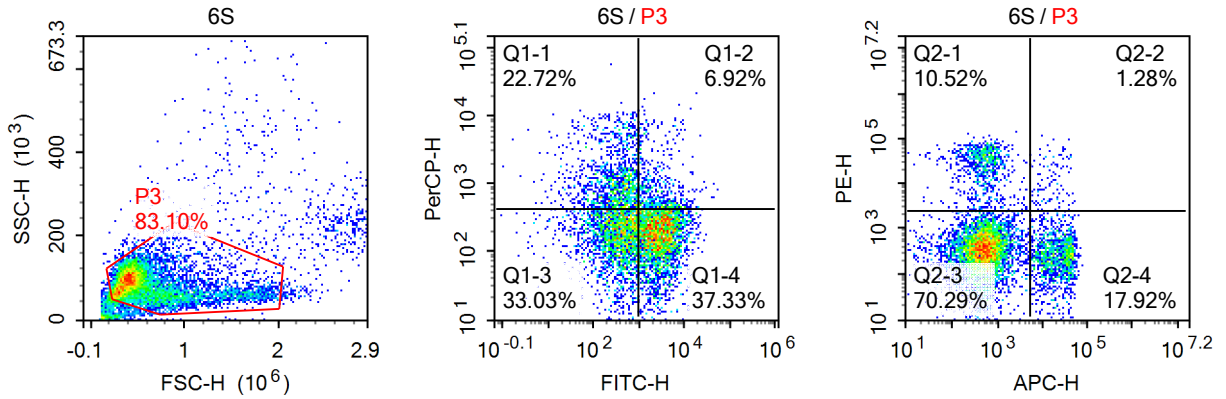
样本统计表格 - 6P

Gate	Count	% Parent	X	Y	Median X	Median Y
All	10,000					
P3	8,730	87.30%	FSC-H	SSC-H	505,875	81,547
Q1-1	1,628	18.65%	FITC-H	PerCP-H	281	877
Q1-2	659	7.55%	FITC-H	PerCP-H	3,210	671
Q1-3	1,702	19.50%	FITC-H	PerCP-H	367	141
Q1-4	4,741	54.31%	FITC-H	PerCP-H	3,437	121
Q2-1	637	7.30%	APC-H	PE-H	437	23,579
Q2-2	65	0.74%	APC-H	PE-H	13,103	13,928
Q2-3	6,294	72.10%	APC-H	PE-H	374	350
Q2-4	1,734	19.86%	APC-H	PE-H	24,296	171



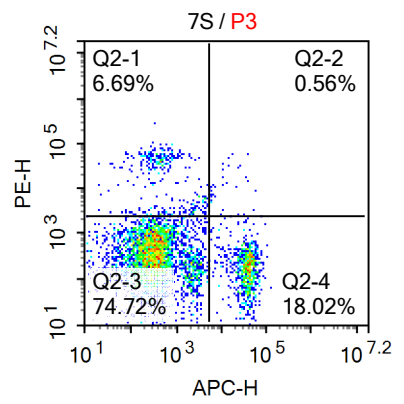
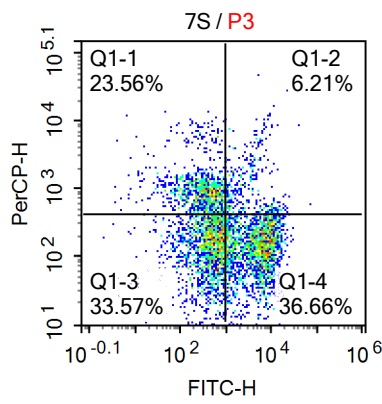
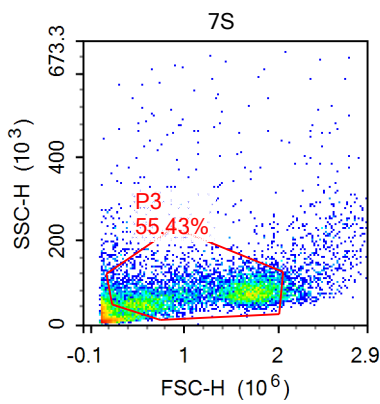
样本统计表格 - 7P

Gate	Count	% Parent	X	Y	Median X	Median Y
All	10,000					
P3	5,939	59.39%	FSC-H	SSC-H	1,233,848	72,911
Q1-1	1,074	18.08%	FITC-H	PerCP-H	259	1,210
Q1-2	612	10.30%	FITC-H	PerCP-H	3,400	1,102
Q1-3	2,065	34.77%	FITC-H	PerCP-H	453	118
Q1-4	2,188	36.84%	FITC-H	PerCP-H	3,738	143
Q2-1	466	7.85%	APC-H	PE-H	469	26,832
Q2-2	46	0.77%	APC-H	PE-H	16,706	9,079
Q2-3	4,752	80.01%	APC-H	PE-H	223	309
Q2-4	675	11.37%	APC-H	PE-H	33,258	194



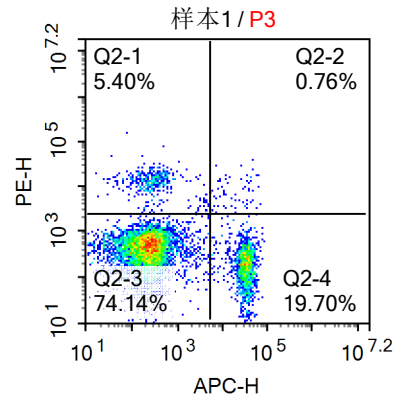
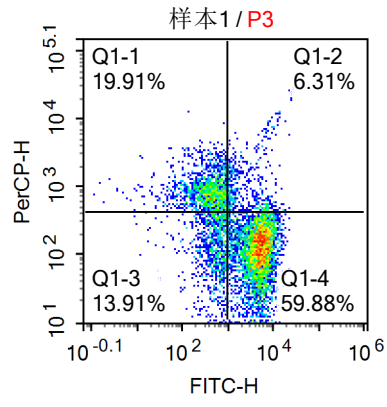
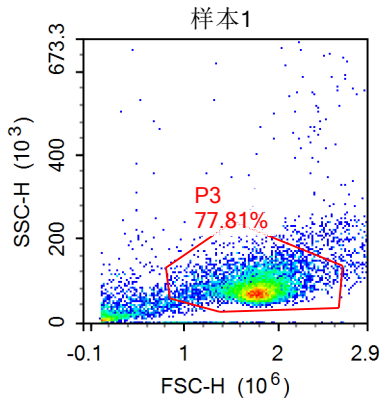
样本统计表格 - 6S

Gate	Count	% Parent	X	Y	Median X	Median Y
All	10,000					
P3	8,310	83.10%	FSC-H	SSC-H	478,468	81,923
Q1-1	1,888	22.72%	FITC-H	PerCP-H	192	1,137
Q1-2	575	6.92%	FITC-H	PerCP-H	2,655	610
Q1-3	2,745	33.03%	FITC-H	PerCP-H	316	147
Q1-4	3,102	37.33%	FITC-H	PerCP-H	2,689	150
Q2-1	874	10.52%	APC-H	PE-H	477	30,461
Q2-2	106	1.28%	APC-H	PE-H	15,819	10,205
Q2-3	5,841	70.29%	APC-H	PE-H	446	282
Q2-4	1,489	17.92%	APC-H	PE-H	20,874	207



样本统计表格 - 7S

Gate	Count	% Parent	X	Y	Median X	Median Y
All	10,000					
P3	5,543	55.43%	FSC-H	SSC-H	1,230,000	70,948
Q1-1	1,306	23.56%	FITC-H	PerCP-H	230	993
Q1-2	344	6.21%	FITC-H	PerCP-H	3,466	952
Q1-3	1,861	33.57%	FITC-H	PerCP-H	429	121
Q1-4	2,032	36.66%	FITC-H	PerCP-H	5,159	118
Q2-1	371	6.69%	APC-H	PE-H	440	27,531
Q2-2	31	0.56%	APC-H	PE-H	13,102	11,427
Q2-3	4,142	74.72%	APC-H	PE-H	281	270
Q2-4	999	18.02%	APC-H	PE-H	36,749	146



样本统计表格 - 样本1

Gate	Count	% Parent	X	Y	Median X	Median Y
All	10,000					
P3	7,781	77.81%	FSC-H	SSC-H	1,771,486	77,177
Q1-1	1,549	19.91%	FITC-H	PerCP-H	359	868
Q1-2	491	6.31%	FITC-H	PerCP-H	3,475	743
Q1-3	1,082	13.91%	FITC-H	PerCP-H	532	100
Q1-4	4,659	59.88%	FITC-H	PerCP-H	4,575	93
Q2-1	420	5.40%	APC-H	PE-H	260	13,478
Q2-2	59	0.76%	APC-H	PE-H	23,117	7,646
Q2-3	5,769	74.14%	APC-H	PE-H	197	416
Q2-4	1,533	19.70%	APC-H	PE-H	31,849	166